

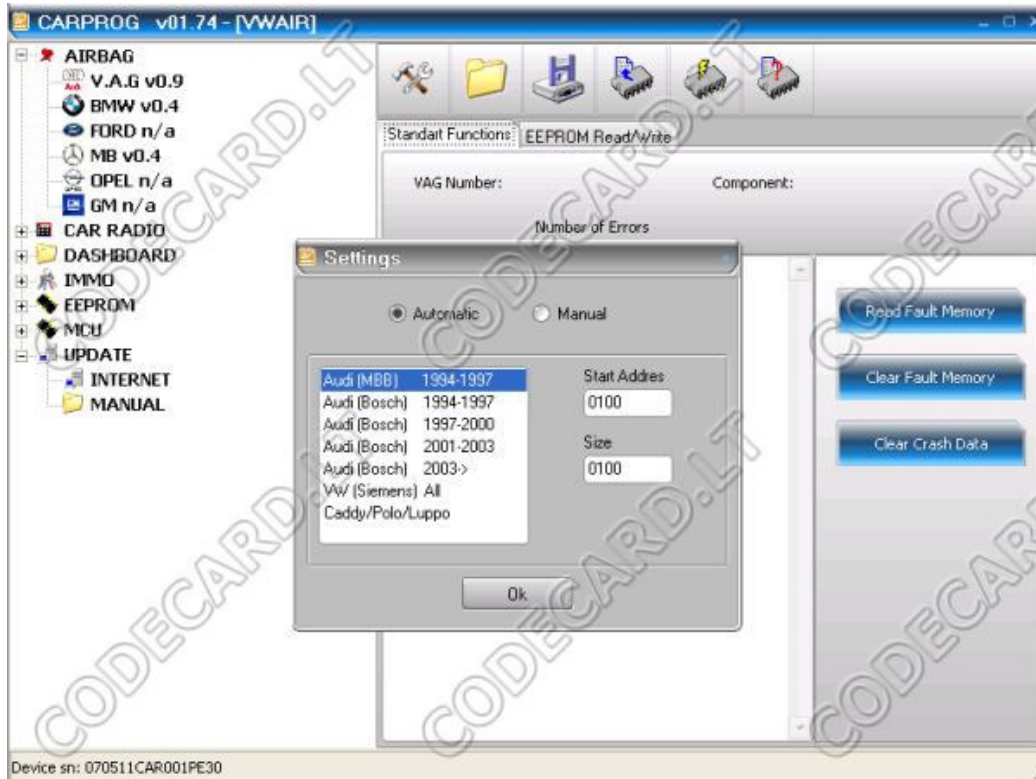
CarProg VAG (Audi, VW, Seat, Skoda) Airbag Reset Tool user manual

After car crash and airbag deployment, VW-Audi airbag sensor can be locked (Control unit faulty or deployed) and must be replaced. Even after small accident Airbag sensor will write in internal memory special error message "crash data stored" or "computer fault" and after you need to exchange very expensive sensor to new one. With our CarProg VAG Airbag Reset Tool you can reset and repair airbag computer in your office in 1 minute. No need to remove airbag sensor from the car.



How CarProg VAG Airbag Reset Tool works:

VAG Airbag Reset Tool has incorporated fully automatic airbag sensor type recognition. VAG Airbag Reset Tool works with any notebook or PC which has a USB port. Just connect CarProg with cable A1 (CarProg OBD2 adapter) to the car OBD2 connector and start CarProg program.



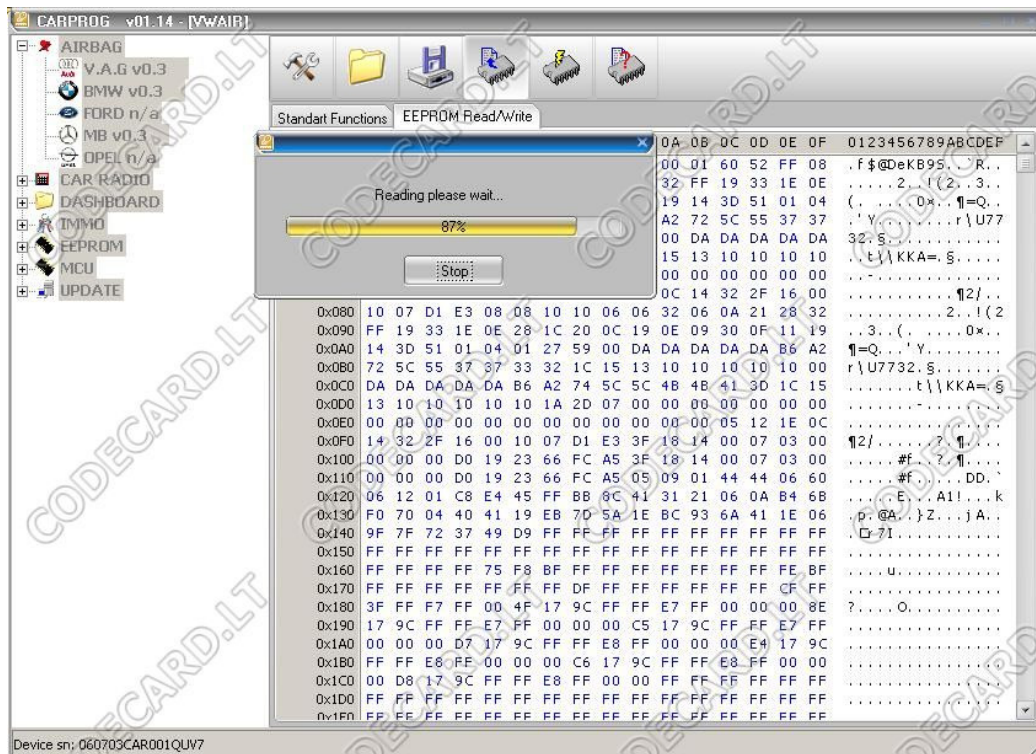
Go to the "Settings" – you can select "Automatic sensor type" detection or select airbag sensor type manually. **For all types except Caddy/Polo/Luppo we recommend to select "Automatic" type recognition.**

Now switch car ignition ON and check car airbag DTC memory. Try to erase fault memory with CarProg button "Clear Fault Memory". If DTC fault "Crash data stored", "Control module faulty" or "Controller malfunction" is still in airbag sensor memory and airbag lamp is ON – reset airbag sensor with "Clear crash memory".



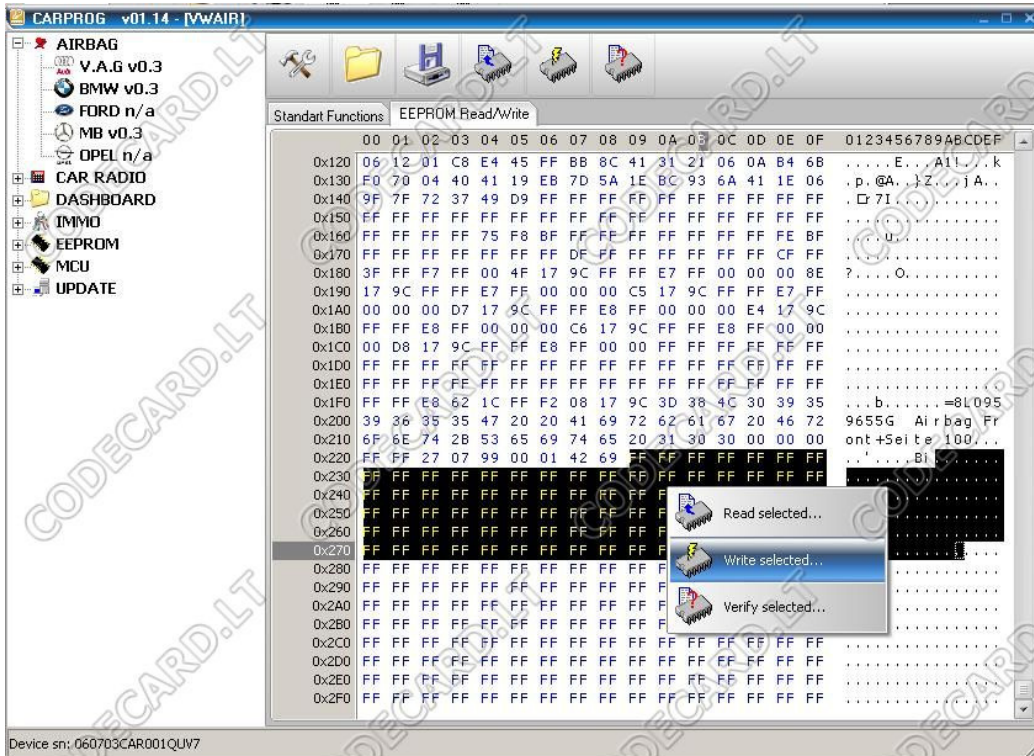
After "Clear crash memory" car airbag sensor is ready to use with new airbags installed.

Also you can read and write by OBDII connector airbag sensor internal EEPROM memory. This option will help you to save EEPROM from good sensor and use this file like backup if in next case memory will be damaged.



CODECARD.LT

CARPROG



For older VW-Audi cars use OBD2 to VAG old type converter (VAS-5051-2 not included in package). Sensors with white or orange 30-pin connector.



Works with these cars and airbag sensors to year 2006:

- **AUDI 80, 100, A6 1992-1995:** **Airbag III by MBB:** Crash data erase, Fault erase, EEPROM read/write by VAG connector or by airbag sensor connector:
 - 4D0 959 655 , ZAE ;
 - 4D0 959 655 A, ZAE ;
- **AUDI A4, A6, A8 1994-1997:** **Airbag V BOSCH:** Crash data erase, Fault erase, EEPROM read/write by OBDII connector by airbag sensor connector:
 - 8A0 959 655 C (Bosch 0 285 001 038);
 - 8A0 959 655 K (Bosch 0 285 001 155);
 - 8A0 959 655 K (Bosch 0 285 001 151);
 - 8A0 959 655 A (Bosch 0 285 001 086);
 - 8A0 959 655 (Bosch 0 285 001 085);and all others if they look like this:



- **AUDI A3, A4, A6, A8 <1999** : Airbag 7 made by **BOSCH** - Crash data erase, Fault erase, EEPROM read/write by OBDII connector by airbag sensor connector:
 - 4B0 959 655 C (Bosch 0 285 001 106) ;
 - 4B0 959 655 J (Bosch 0 285 001 307) ;
 - 4D0 959 655 C (Bosch 0 285 001 150) ;
 - 4D0 959 655 J (Bosch 0 285 001 307) ;
 - 8D0 959 655 C (Bosch 0 285 001 176) ;
 - 8D0 959 655 L (Bosch 0 285 001 305) ;
 - 8L0 959 655 F (Bosch 0 285 001 304) ;
 - 8L0 959 655 C (Bosch 0 285 001 261) ;and similar if they looks like in picture:



- **Audi TT, A2, A3, A4, A6, A8 - 2001<** : **Airbag 8 BOSCH (with CR16 44PLCC or HC12 processor)** - Crash data erase, Fault erase, EEPROM read/write by OBDII connector by airbag sensor connector:
 - 8D0959655F (Bosch 0 285 001 270) ;
 - 4D0 959 655 J (Bosch 0 285 001 266) ;
 - 8D0 959 655 J (Bosch 0 285 001 276) ;
 - 4B0959655 G (Bosch 0 285 001 274) ;
 - 8L0 959 655 J 0 285 001 352 (HC12 9H91F)
 - 8L0 959 655 G 0 285 001 352 (HC12 0J38M)and similar if they looks like in picture (usually Bosch number last digits is 250-320):



- **Audi TT, A2, A3, A4, A6, A8 - 2001< !!! Use CarProg CR16 Tool !!!** : Airbag BOSCH – Read/Write CR16 EEPROM by K-line – only removed from car. Automatic “crash data” erase.
 - 8N0 959 655 B Bosch (0 285 001 508)
 - 8L0 959 655 L 0 285 001 352 (HC12)
 - 8Z0 959 655 D 0 285 001 385
 - 8HO 959 655 D - 0 285 001 703 CR16
 - 8HO 959 655 B - 0 285 001 652 CR16
 - 8E0 959 655J 2003
 - 8E0 959 655 2003 - 0 285 001 400 CR16
 - 8E0 959 655 B 0 281 001 483
 - 4B0 959 655 M
 - 4B0 959 655 P
 - 8P0 959 655 F 0 281 001 482

- **VW - Golf IV, Passat B5, Sharan** - Crash data erase, Fault erase, EEPROM read/write by OBDII connector by airbag sensor connector:
 - 1J0 909 603 Siemens;
 - 1J0 909 609 Siemens;
 - 1J0 909 607 Siemens;
 - 3B0 959 655 B Bosch,
 - 8L0 959 655 A Bosch;
 - 6Q0 909 605 A Siemens;
 - 6Q0 909 605 B Siemens;
 - 1C0 909 605 C
 - 1C0 909 605 H
 - 6Q0 909 605 C
 -

- **VW Touran, Polo, Caddy 2002-2006 VW62 (with secured HC08 processors 1L02M, 1L67J)** - Crash data erase, EEPROM read/write by airbag sensor connector K-line:
 - 1T0 909 605 VW62
 - 1T0 909 605 B VW62
 - 6Q0 909 605 AH
 - 6Q0 909 605 AJ
 - 6Q0 909 605 P
 - 1C0 909 605 C

Audi:

4A0 959 655 Bosch 0 285 001 036 93C46
 4B0 959 655 C Bosch 0 285 001 106
 4B0 959 655 J Bosch 0 285 001 307
 4D0 959 655 A by MBB
 4D0 959 655 C Bosch 0 285 001 150

4D0 959 655 J Bosch 0 285 001 307
 4D0 959 655 by MBB
 8A0 959 655 A Bosch 0 285 001 086
 8A0 959 655 Bosch 0 285 001 085
 8A0 959 655 C Bosch 0 285 001 038
 8A0 959 655 K Bosch 0 285 001 151
 8A0 959 655 K Bosch 0 285 001 155
 8D0 959 655 L Bosch 0 285 001 305
 8D0 959 655 C Bosch 0 285 001 176
 8H0 959 655 B Bosch 0 285 001 652
 8E0 959 655 CR16MCS9
 8E0 959 655 J Bosch 0 285 001 691 CR16MCS5
 8L0 959 655 C Bosch
 8L0 959 655 C Bosch 0 285 001 261
 8P0 959 655 D Bosch 0 285 001 700 CR16MCS9

Seat:

Alhambra 1J0 909 603 Siemens 5WK4163 VW3 68HC11E9
 Octavia 1C0 909 601 5WK43120 VW51 68HC
 Octavia 6Q0 909 605 Siemens 5WK42866 68HC08AZ32
 Fabia 1C0 909 601C VW51 68HC

Volkswagen 1J0 909 603 A VW3 68HC11E9
 Volkswagen 1C0 909 601 A Siemens W5
 Volkswagen Sharan 1C0 909 605 Siemens 5WK43121 68HC08AZ32
 Volkswagen Passat 1C0 909 605 B 5WK43124 VW51 68HC908AZ32
 Volkswagen Polo/Passat 1C0 909 605 A 5WK43122 VW51 8HC908AZ32
 Volkswagen Golf IV 1C0 909 605 F VW61 68HC912
 Volkswagen Passat 1C0 909 605 C VW61 68HC12D60
 Volkswagen 1J0 909 603 AC VW3 68HC11E9
 Volkswagen 1J0 909 603 E VW3 68HC11E9
 Volkswagen 1J0 909 603 5WK4163 VW3 68HC11E20
 Volkswagen 1J0 909 604 A VW3 68HC11E9
 Volkswagen 1J0 909 607 A VW3 68HC11
 Volkswagen Passat 1J0 909 607 5WK4199 68HC11E9
 Volkswagen Passat 1J0 909 607 C 5WK4199 68HC11E9
 Volkswagen 1J0 909 608 5WK4154 VW3 68HC11E9
 Volkswagen 1J0 909 608 AN Siemens 5WK4154 VW3 68HC11E9
 Volkswagen 1J0 909 608 BA Siemens 5WK4154 VW3 68HC11E9
 Volkswagen Golf IV 1J0 909 609 A 5WK42800 VW3 68HC11E9
 Volkswagen Golf IV 1J0 909 609 VW3 68HC11
 Volkswagen Touran 1T0 909 605 5WK43150 VW62 68HC912D60
 Volkswagen Touran 1T0 909 605 C 5WK43158 VW62 68HC912D60
 Volkswagen 3B0 959 655 B Bosch 0 285 001 173 VW3 68HC11E20
 Volkswagen 6N0 909 601 E Siemens 5WK4104E 68HC05B16
 Volkswagen 6N0 909 601 H Siemens 5WK4130 VW2 68HC05B16
 Volkswagen 6N0 909 603 VW2 68HC05B16
 Volkswagen 6N0 909 603 AC 5WK4137 VW2 68HC05B16
 Volkswagen 6N0 909 603 AM VW2 68HC05B16
 Volkswagen 6N0 909 603 AR 5WK4137 VW2 68HC05B16
 Volkswagen 6N0 909 603 E VW2 68HC05B16
 Volkswagen 6N0 909 603 F VW2 68HC05B16
 Volkswagen 6N0 909 603 H VW2 68HC05B16
 Volkswagen 6N0 909 603 P VW2 68HC05B16
 Volkswagen Polo 6N0 909 603 5WK4137 VW2 68HC05B16

Volkswagen Polo 6N0 909 603 5WK4137 VW2 68HC05B16
Volkswagen 6N0 909 603 T VW2 68HC05B16
Volkswagen 6N0 909 606 E VW2 68HC05B16
Volkswagen 6N0 909 606 S VW2 68HC05B16
Volkswagen 6Q0 909 601 5WK42865 VW5 68HC08AZ32
Volkswagen 6Q0 909 601 A Siemens 5WK42868 VW5 68HC08AZ32
Volkswagen 6Q0 909 605 Siemens 5WK42866 VW5 68HC08AZ32
Volkswagen 6Q0 909 605 A Siemens 5WK42867 VW5 68HC08AZ32
Volkswagen 6Q0 909 605 B Siemens 5WK42869 VW5 68HC08AZ32
Volkswagen Golf IV 6Q0 909 605 F
Volkswagen 6Q0 909 605 H Siemens 5WK42950 VW5 68HC08AZ32
Volkswagen Caddy 6Q0 909 605 P VW52 68HC08AZ32
Volkswagen Caddy 6Q0 909 605 T VW52 68HC908AZ60A
Volkswagen 8L0 959 655 A Bosch 0 285 001 174 68HC11K4
Volkswagen 8L0 959 655 B Bosch 68HC11K4

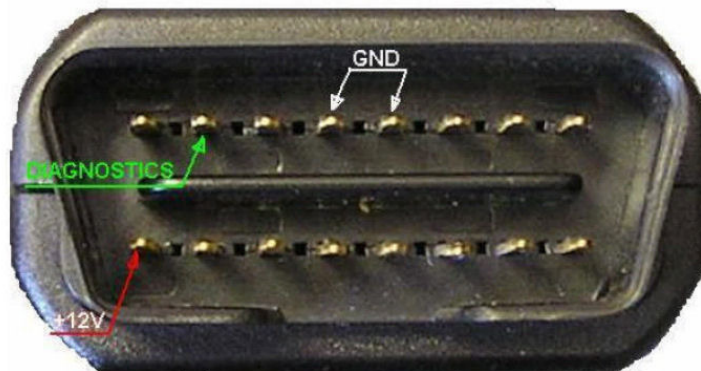
VW
VW -- 6Q0 909 605 E VW8 - 95320
VW - Bosch - VW3 - 68HC11E20
VW - Siemens - VW2 - 68HC05B16
VW - Siemens - VW3 - 68HC11E20
VW - Siemens - VW5 - 68HC08AZ32
VW - Siemens - VW6 - 68HC912D60
VW - Siemens - VW8 - 95160
VW - TRW - VW5 - 24c08

- **AUDI A4, A6, A8 1994-1997:** **Airbag V BOSCH:** 8A0 959 655 C (Bosch 0 285 001 038), 8A0 959 655 K (Bosch 0 285 001 155), 8A0 959 655 K (Bosch 0 285 001 151) - Crash data erase, Fault erase;
- **VW - Golf III, Passat B4, Sharan:** 1J0 909 603 **SIEMENS** - Crash data erase, Fault erase;



You can connect this sensor on the table and erase crash data using our VAG Airbag Tool.
Use this wiring:

Airbag sensor: K-line = pin 9, GND = pin 6, +12V = pin 5
VAG Airbag Reset Tool: K-line = pin 7, GND = pin 4+5, +12V = pin 16



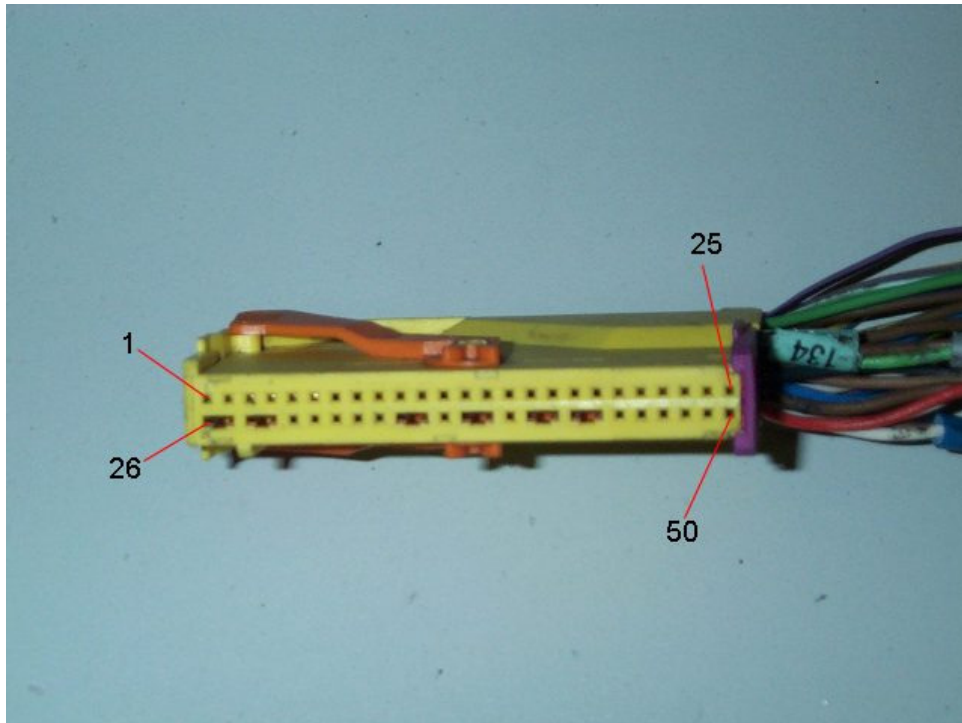
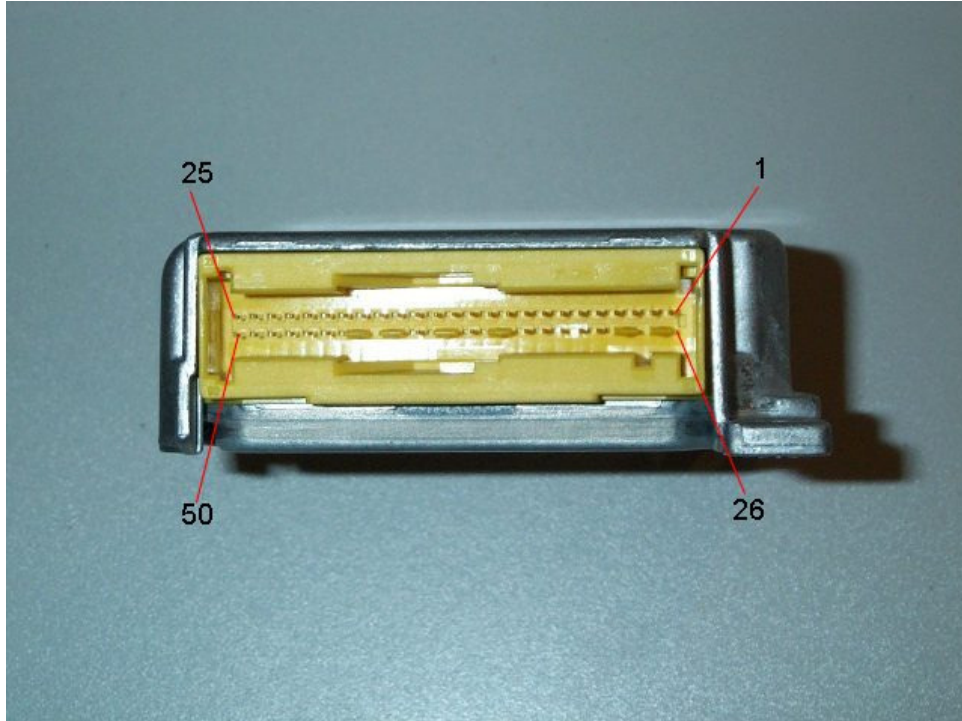
Apply +12V power supply and push RED or BLACK button on the VAG Airbag Tool.

VAG cars 1997-1999 airbag sensor with yellow or orange 50-pin connector.

CARPROG

- **VW - Golf IV, Passat B5:** 1J0 909 609, 1J0 909 607 - **SIEMENS** - Crash data erase, Fault erase;
- **AUDI A3, A4, A6, A8 <1999:** **Airbag 7 BOSCH** - 4B0 959 655 C, 4B0 959 655 J, 4D0 959 655 C, 4D0 959 655 H, 8D0 959 655 C, 8D0 959 655 L, 8L0 959 655 F - all Bosch Airbag 7 - Crash data erase, Fault erase;





You can connect this sensor on the table and erase crash data using our VAG Airbag Tool. Use this wiring:

Airbag sensor: K-line = pin 9 (connected with car OBDII connector pin 7), GND = pin 6, +12V = pin 5, airbag lamp = pin 30;

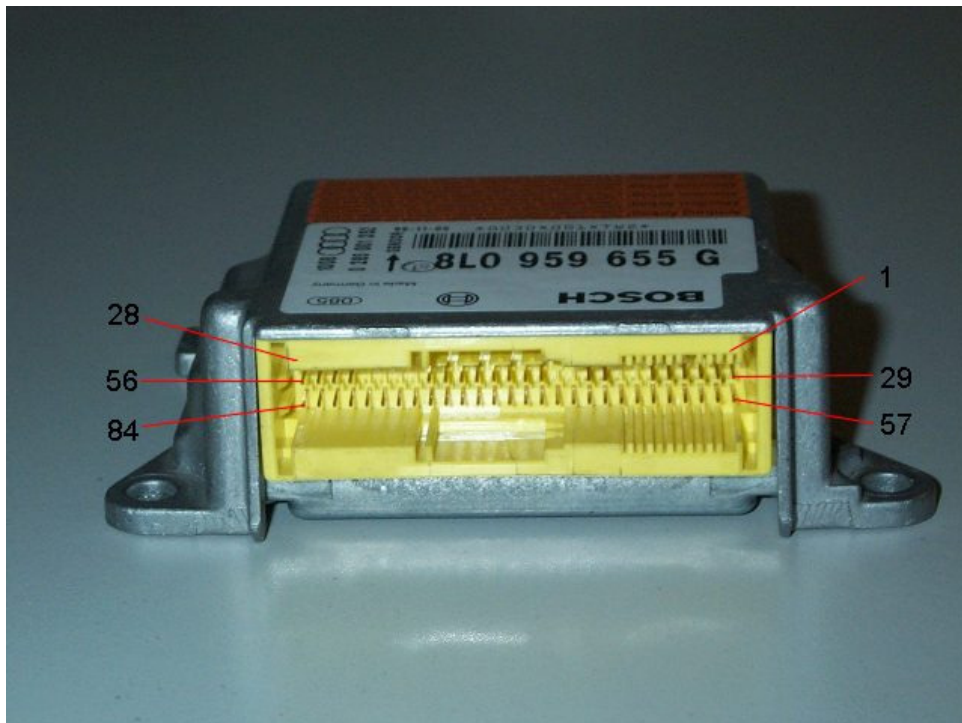
VAG Airbag Reset Tool: K-line = pin 7, GND = pin 4+5, +12V = pin 16;

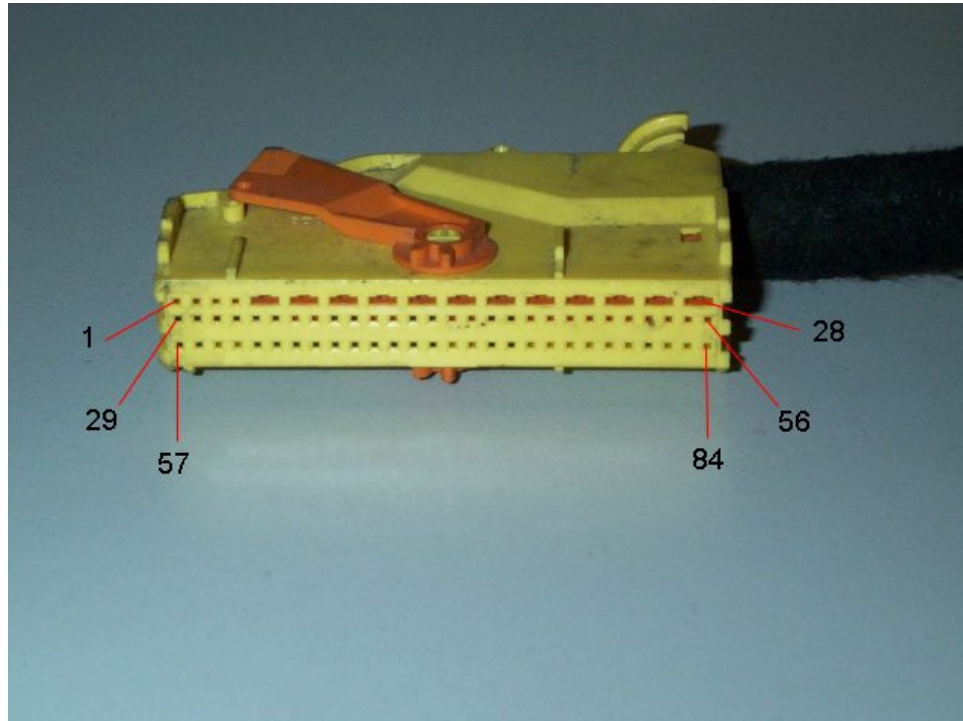
Apply +12V power supply and push RED or BLACK button on the VAG Airbag Tool.

Audi cars 2000 -2002 airbag sensor with yellow 84-pin connector.

- **Audi A2, A3, A4, A6, A8 - 1999<:** Airbag 8 BOSCH - Crash data erase, Fault erase (can erase "Controller Malfunction");
- 8L0 959 655 G (Bosch 0 285 001 352) and others with **HC12 processor**;
- 4D0 959 655 J (Bosch 0 285 001 266), 8D0 959 655 J (Bosch 0 285 001 276), 8D0 959 655 F (Bosch 0 285 001 270), 8D0 959 655 M and others with **National CR16 (44 PLCC)**;







You can connect this sensor on the table and erase crash data using our VAG Airbag Tool. Use this wiring:

Airbag sensor: K-line = pin 67 (connected with car OBDII connector pin 7), GND = pin 66, +12V = pin 65, airbag lamp = pin 68 and 70;

VAG Airbag Reset Tool: K-line = pin 7, GND = pin 4+5, +12V = pin 16

Apply +12V power supply and push RED or BLACK button on the VAG Airbag Tool.

--

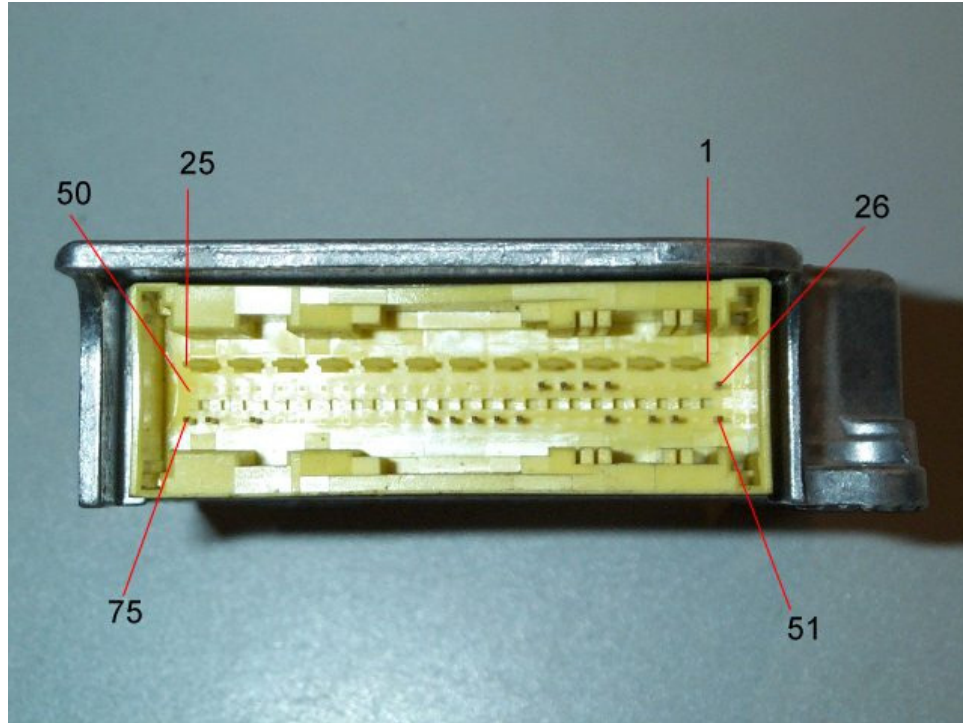
VW cars 2000-2004 airbag sensors with yellow 75-pin connector.

- **VW - Golf IV, Passat B5, Sharan:** 6Q0 909 605 A, 6Q0 909 605 B - **SIEMENS** - Crash data erase, Fault erase;
- **VW - Golf IV, Passat B5, Sharan:** 1C0 909 605 C, 1C0 909 605 F, 1C0 909 605 H, 6Q0 909 605 C - **SIEMENS** - Crash data erase, Fault erase;
- **VW - Passat B6:** new **SIEMENS** - Crash data erase, Fault erase;
- **VW-** Polo;

These sensors use CAN bus. In some cases this airbag type "crash erase" works only on the table. If by OBDII connector you can't erase crash data, try to

CARPROG

disconnect instrument cluster blue connector and erase by OBDII again. If red diode indicates crash data erase error, you must remove airbag sensor from the car, connect it on the table and now erasing must by OK.





You can connect this sensor on the table and erase crash data using our VAG Airbag Tool. Use this wiring:

Airbag sensor: K-line = pin 54 (connected with car OBDII connector pin 7), GND = pin 51, +12V = pin 26, airbag lamp on dashboard by CAN bus;
VAG Airbag Reset Tool: K-line = pin 7, GND = pin 4+5, +12V = pin 16

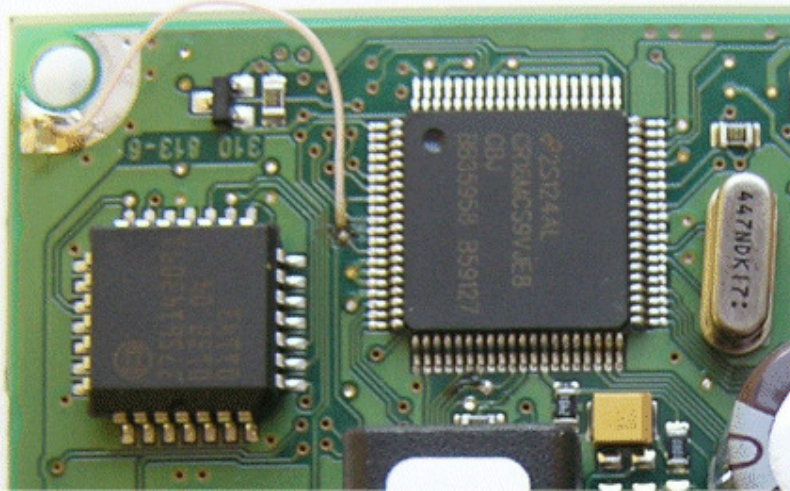
Apply +12V power supply and push RED or BLACK button on the VAG Airbag Tool.

New Audi, VW from 2002 airbag sensors.

Airbag sensor from VW-Audi (A3, A4, A6, A8 2002-2005, Touareg) have diagnostic by CAN bus. But K-line is still used. Some times K-line is not connected to OBDII connector. To repair these sensors you must remove it from the car and connect on the table. Is possible to read and write airbag sensor internal CR16 (80 QFP) EEPROM memory by K-line. Works with all VW-Audi airbag sensors with **National CR16 (80 pin QFP)** inside.

How to work with these airbag modules? New Audi and VW cars airbag sensors have many different software versions. First we planed to release VW-Audi Airbag Reset Tool update with automatic "crash data" erase, but after many customers questions about new cars airbag repair, we released CR16 programmer by OBDII connector. These sensors have VIN number stored in airbag ECU and you can't change all memory. To erase "crash data", you must do EEPROM modification by yourself.

Remove and open airbag sensor. For Read/Write VW-Audi airbag sensor microcontroller CR16 internal EEPROM, you short processor pin 13 to GND like in picture:



You can install sensor back to the car or connect this sensor on the table. Some cars don't have K-line, in this case use connection on the table.

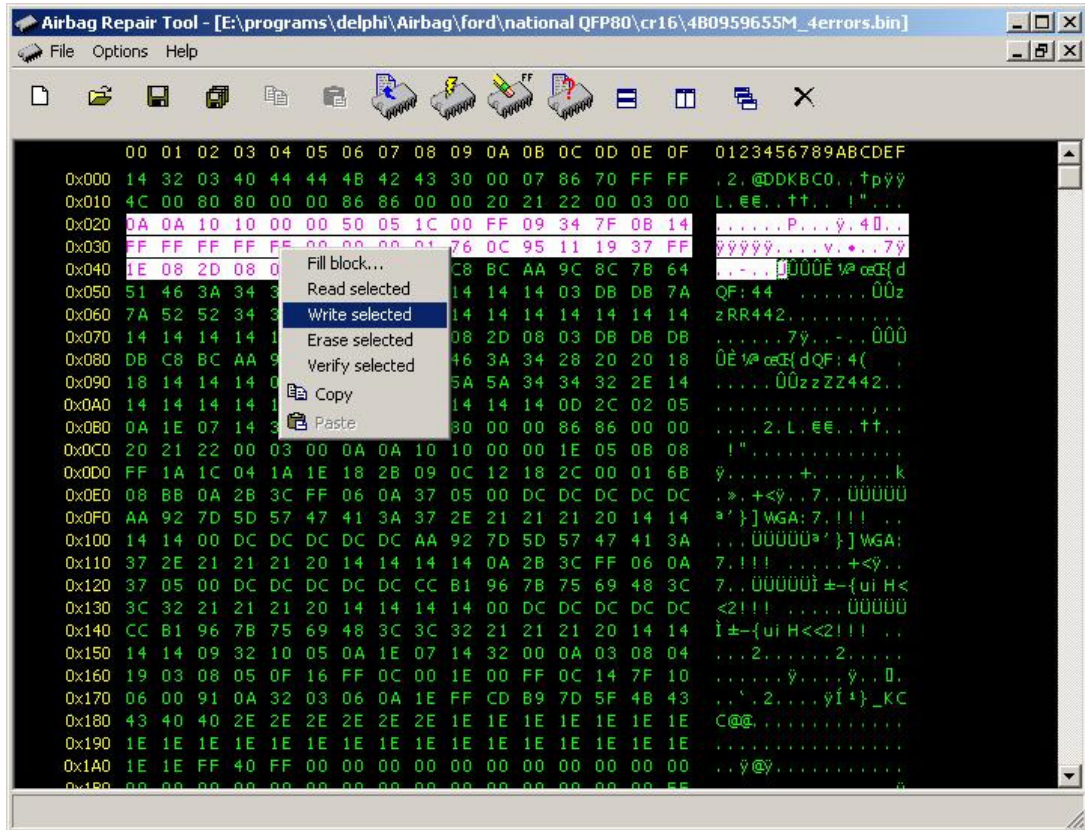
Use this wiring:

Airbag sensor: K-line = pin 67 (connected with car OBDII connector pin 7), GND = pin 66, +12V = pin 65, airbag lamp = pin 68 and 70;

VAG Airbag Reset Tool: K-line = pin 7, GND = pin 4+5, +12V = pin 16;

Apply +12V power supply and read and save original EEPROM. Now you can try to do EEPROM modification, install sensor to the car (disconnect pin 13 wire!) and see "crash data" status. In most cases some EEPROM part modification to 00 or to FF erase crash data.

CODECARD.LT
CARPROG



Works also for Ford with CR16 (80 pin) airbags.
